

# AQUASORB

## The Original Super Towel

An indispensable part of any clinic's cleaning, infection control and instrument care strategy.

### Significant Benefits from a Remarkable Cloth



#### Lint Free

Knitted nylon/polyester microfibre does not shed lint.

#### Super-absorbent

Fibre will absorb 315% of its own weight without dripping.

#### Autoclavable

Steam sterilizable - can be used as a tray liner.

#### Washable

Reprocess manually, or in a commercial linen service.

### Universal uses of AQUASORB Microfibre Towel:

- BENCH TOP DRYING PLATFORM FOR INSTRUMENTS
- TOWEL FOR DRYING INSTRUMENTS AND EQUIPMENT
- INSTRUMENT TRAY LINER
- WIPE FOR CLEANING GLASS OR LENSED INSTRUMENTS
- WASHER FOR INSTRUMENTS & SINK
- PATIENT FACE WASHER - HAND TOWEL
- YOUR SUBSTITUTE DRYING CABINET

AQUASORB Microfibre cloth is perfect as a drying platform for instruments.

The very soft and extra thick pile protects the instruments, increases water absorption, and is lint free.



AQUASORB Microfibre cloth makes an excellent alternative to a drying cabinet. AQUASORB is highly effective in cleaning and drying surgical instruments and devices.



#### Presentations and Videos

"Cleaning for Infection Control"  
Learning Centre

[www.majacmedical.com.au](http://www.majacmedical.com.au)

**AQUASORB** is available in four usefull sizes:

AQ1 small (55 x 22 cm, pack of 10)

AQ2 medium (55 x 42 cm, pack of 10)

AQ3 large (65 x 50 cm, pack of 10)

AQ4 towel (74 x 120 cm, single)



Majac Medical Products Pty Ltd

Ph: +617 3265 6355

Fax: +617 3865 2729

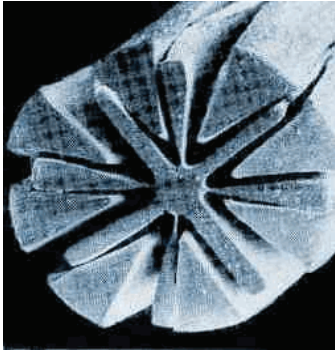
[sales@majacmedical.com.au](mailto:sales@majacmedical.com.au)

[www.majacmedical.com.au](http://www.majacmedical.com.au)



Also Available From:

# Why AQUASORB is the Superior Microfibre Cloth:

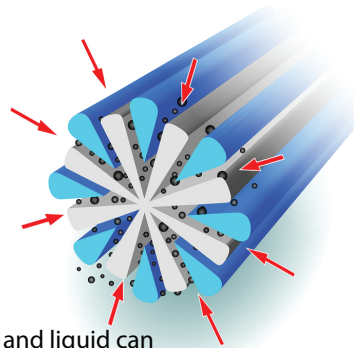


**AQUASORB** microfibre towels are incredibly soft yet ultra strong. The cloth is made from the highest quality synthetic fibres that are finer than 1/100th the diameter of a human hair and 1/20th the thickness of a strand of silk.

**AQUASORB** absorbs significantly more liquid and soil. The cloth is developed from a unique blend of high quality polyester and polyamide (nylon) fibres that have been split during manufacturing. The split fibre creates a larger surface area which gives them the ability to absorb significantly higher amounts of liquid. What's more, the split-fibre structure also creates microscopic recesses which more effectively trap soil particles.

**Figure 1.** Cross section of a split microfibre showing the fine crevices that increase absorption and entrapment of soil particles.

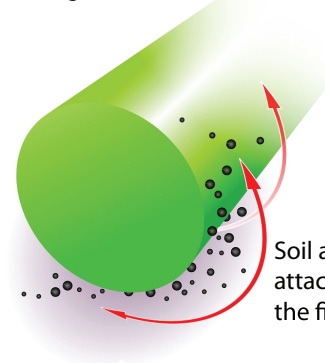
## Split Microfibre



The soil and liquid can penetrate into the splits in the fibre and are trapped.

## Unsplit Fibre

(eg cotton or standard fibre cloths)



Soil and liquid can only attach to the surface of the fibre

**Figure 2.** Split microfibre showing the fine crevices that increase absorption and entrapment of soil particles. Standard fibre cloths have much smaller surface area and very limited absorption capacity.

## Washing Instructions

### Manual Washing

1. Soak & wash in a tepid solution of clinical detergent (Clinidet is recommended).
2. Rinse thoroughly in hot water after washing.
3. Wring out excess water then hang out or spin dry.

### Mechanical Washing/Commercial Laundry

**AQUASORB** may be washed in automatic washing machines or commercial laundry service using the usual pre-rinse, wash & spin cycles. It is recommended that the pre-wash is on cool/warm & the final rinse cycle on hot. The laundry should be aware that all "medical practice" laundry may be contaminated.

### Autoclavable

Wash & rinse **AQUASORB** in accordance with the above procedures. Can be autoclaved as an effective tray liner. Process as per normal cycle of time & temperature (134°C for 3 minutes). NOTE: **AQUASORB** is super-absorbent & the drying cycle may have to be extended.

**AQUASORB** should only be washed with lint free materials and in a clinical detergent that does not contain fabric softeners as these will block the fine splits in the fibre.

NOTE: **AQUASORB** is used to dry instruments on the "clean" side of the cleaning cycle, that is after the instruments or devices have been soaked, washed clean (either manually or ultrasonically) & rinsed with hot water (as per Practice Manual & requirements of AS/NZS 4187 & AS/NZS 4815).

Many practices wash **AQUASORB** daily, at close of business & leave to dry overnight.